

## Hybrid Night Heron – Standard or High Deck



### Introduction:

The Night Heron line is an evolutionary branch of the [Guillemots](#), but I took a look back at Greenland Inuit boats for some of my hull shaping inspiration. This boat brings the volume of the hull out towards the ends more for a higher prismatic coefficient. This gives it good efficiency at faster speeds. It has fairly hard chines with no concave sections. A slight lean will allow the boat to turn easily. The low back deck permits the paddler to easily lean back so their head touches the back deck. The foredeck is high enough that most paddlers will be able to get their legs in and out while sitting down. If you need more room for your legs you can look at the [High Deck Night Heron](#).

This boat has been widely admired for its beauty, with an example accepted in the permanent collection at the Museum of Modern Art, but that does not detract from its on the water performance where it is fast and efficient and surfs very easily. It is a secure boat in rough water and responds well playing in the surge of rock gardens.

At 20" wide this is a narrow boat, however it is not scary to paddle. Even novice paddlers quickly get comfortable. The boat tracks well with good balance and is quite fast. It is very easy to roll and perform various braces.

For those wanting a super low-decked rolling machine suitable for all the lay-back style rolls I have drawn up a "[Greenland Styled Deck](#)" for the Night Heron.

The plans for this boat include the lines for the [High Deck Night Heron](#) as well.

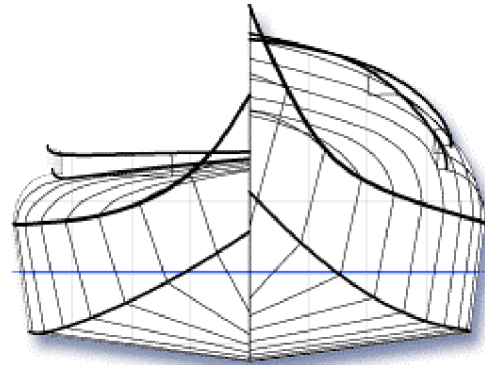
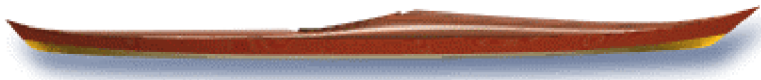
## Hybrid Night Heron

This boat combines the quick assembly of the [stitch-and-glue](#) hull and the beauty of a [strip-built](#) deck. The hull is exactly the same as the [S&G Night Heron](#) and the deck is exactly the same as the [strip-built version](#). Since stitch and glue construction is generally quicker than strip, this [hybrid](#) goes together more quickly than the strip version. Since the strips look better to a lot of people than the plywood, the hybrid puts the beauty where you will see it, on top.

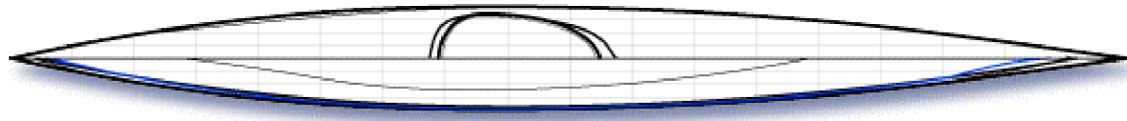
Because the hull shape is the same as the stitch and glue version, the performance will be the same. This boat is fast and efficient, tracks straight and carves turns easily.

These plans include the regular and [high deck](#) lines so you can choose the configuration that suits you best.

# Hybrid Night Heron – drawings



Beam	20.0	inches	50.8	cm
Waterline Beam	19.4	inches	49.3	cm
Draft	3.8	inches	9.7	cm



Length	18.0	feet	5.49	meters
Waterline Length	16.2	feet	4.94	meters

# Hybrid Night Heron – Standard or High Deck - details

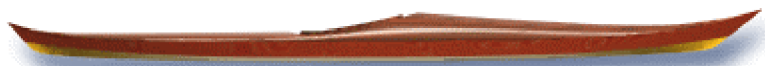


Number of Cockpits: 1

Small Paddler	Average Paddler	Large Paddler	Beginner Paddler	Lakes and Rivers	Open Water	Extend Tour	Surf	Fishing	Racing	Ease of Build
										2

	English		Metric	
Length	18.0	feet	5.5	meters
Beam	20.0	inches	50.8	cm
Waterline Length	16.2	feet	4.9	meters
Waterline Beam	19.4	inches	49.3	cm
Design Displacement	247.7	lbs	112.4	kg
Draft	3.8	inches	9.7	cm
Wetted Area	22.0	sq ft	2.0	sq m
Waterplane Area	17.7	sq ft	1.6	sq m
Surface Area	52.0	sq ft	4.8	sq m
Approx. Bare Boat Weight	36.4	lbs	16.5	kg
Volume	12.7	cu ft	359.7	liters
Prismatic Coeff.	0.57			
Block Coeff.	0.47			
Lateral Plane Coeff.	0.68			
Sinkage	84.0	lbs/in	15.0	kg/cm
Moments to change trim 1 inch	75.6	foot pounds	102.5	kg/cm
Righting Moment at 1 degree	0.08	foot pounds	0.11	kg/cm

## Hybrid Night Heron



Night Heron | Sea Kayak | Hybrid



This boat combines the quick assembly of the [stitch-and-glue](#) hull and the beauty of a [strip-built](#) deck. The hull is exactly the same as the [S&G Night Heron](#) and the deck is exactly the same as the [strip-built version](#). Since stitch and glue construction is generally quicker than strip, this [hybrid](#) goes together more quickly than the strip version. Since the strips look better to a lot of people than the plywood, the hybrid puts the beauty where you will see it, on top.

Because the hull shape is the same as the stitch and glue version, the performance will be the same. This boat is fast and efficient, tracks straight and carves turns easily.

These plans include the regular and [high deck](#) lines so you can choose the configuration that suits you best.

Photographs

